

# Norman Rockwell Informative Performance Task



Source #1: *Triple Self-Portrait*



Source #2: *Lion and Zookeeper*

Today, you will be working on writing an informative piece about the works of Norman Rockwell. The two artworks shown above are (Source #1) *Triple-Self Portrait* and (Source #2) *Lion and Zookeeper*. You will be able to refer to both images throughout the task.

## Directions for Part 1:

Use the images to answer the questions. Your answers can be used as evidence in your opinion piece.

### Notes:

What's going on in *Triple-Self Portrait*?  
What do you see that makes you say that?

### Notes:

What's going on in *Lion and Zookeeper*?  
What do you see that makes you say that?

## Part 2--Write an Informative Piece:

Norman Rockwell is an American artist who was well-known for showing scenes from American **culture** in his lifetime. Today your task is to write an informative piece about how Rockwell shows everyday life in his artwork. You will be able to use your observations and evidence from your notes boxes.

### Remember:

- State a topic and develop a main idea
- Be organized in how you share your ideas
- Include an introduction and a conclusion
- Include capital letters, punctuation, and best spelling
- Include transitions to connect ideas
- Use information from your art sources
- Include the name or number of the source when you use details from the image

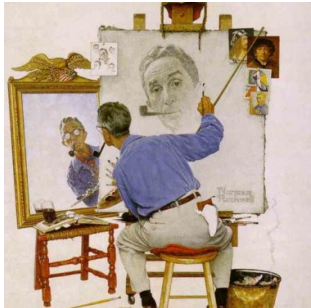
### Glossary:

**Culture** is a group's special way of life including food, clothing, celebrations, traditions, and values. It's the things they do and believe too.

### Be sure to leave time to...

- Plan
- Write
- Edit and revise

### My Writing Plan:



**Source #1:**

*Triple Self-Portrait*



**Source #2:**

*Lion and Zookeeper*



Source #1: *Triple Self-Portrait*



Source #2: *Lion and Zookeeper*

My Writing:

## My Writing:



**Source #1:**

*Triple Self-Portrait*



**Source #2:**

*Lion and Zookeeper*

## My Writing:



Source #1:  
*Triple Self-Portrait*



Source #2:  
*Lion and Zookeeper*